

Project organisation

Connect

The project consists of three components:

1 TD Landscape

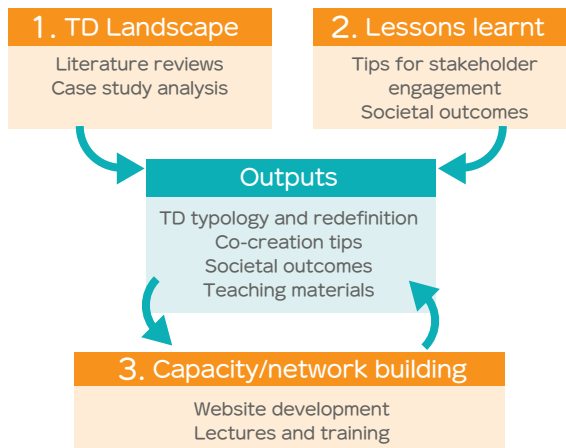
We collect and analyse case studies from around the world to identify good practices and to redefine and categorise TD.

2 Lessons learnt

We identify and compile tips and tactics for effective stakeholder engagement in research from experienced researchers and stakeholders. We also identify the societal outcomes from the completed transdisciplinary projects.

3 Capacity/network building

To share knowledge on co-creation, we develop an information platform, as well as training and educational materials. We also build a network of researchers and practitioners interested in co-creation.



In the co-creation project, we work on transdisciplinary research (TDR) to address global environmental problems. We welcome any inquiries or requests for collaboration.

Project HP
TOMOSIRU
<https://cocreationproject.jp/>



Project Leader



Yuko Onishi
Assistant Professor, RIHN

Yuko Onishi holds a Ph.D. in environmental science from the University of Oxford (UK). Before joining RIHN, she worked for the Food and Agricultural Organization of the United Nations (FAO) and later worked for the National Institute for Environmental Studies (Japan). She is a member of Centre for Future Earth secretariat.



457-4 Motoyama, Kamigamo, Kita-ku, Kyoto, 603-8047 JAPAN
(+81) 075-707-2100
(+81) 075-707-2106



Collect the seeds of knowledge and grow the future

The co-creation project is a project of the Research Institute for Humanity and Nature in Kyoto, Japan. We aim to identify and share tips and methods for knowledge co-creation between researchers and various stakeholders to support the transition towards a sustainable society.

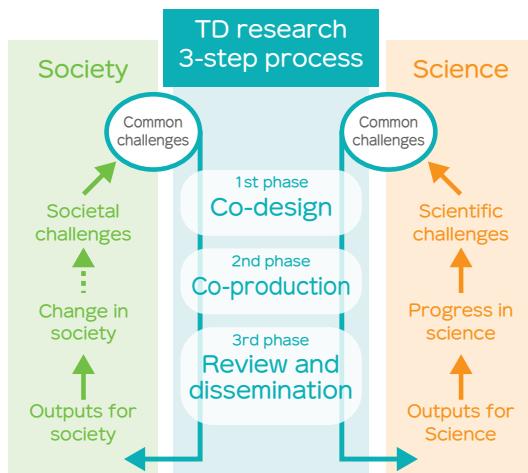
About us

What's co-creation / TD?

Share and spread

Our planet faces a variety of environmental problems, including climate change, biodiversity loss, and air and water pollution. These problems have been caused by human activities and are by no means easily solved. To effectively deal with these problems, it is important that all people involved in their various aspects work together to solve them. This will require new and innovative research approaches.

The aim of this project is to identify a practical framework for transdisciplinary research that consists of methods and tactics for fostering knowledge co-creation between researchers and societal stakeholders, identified from current co-creation practices implemented around the world. Our hope is that our research activities will inspire the implementation of more co-creation projects and will be helpful to get one step closer to the realisation of a sustainable future society.



Co-creation is a form of collaboration in which people involved in various aspects of a societal problem work together to develop innovative solutions toward solving it. Co-creation is also used to describe collaborations between science and society and it is a key guiding principle of Japan's science and technology policy.

Internationally, the term transdisciplinarity (TD) has been used for more than 50 years in a similar context. Transdisciplinary research (TDR) is a type of collaborative research in which scientists from different disciplines work together with non-academic stakeholders, such as local residents and governments, to solve societal problems, by integrating different types of knowledge and expertise of scientists and the stakeholders. To achieve this, it is recommended that scientists and the stakeholders collaborate closely in all research stages.

TD is facilitated by the international research program for the environmental research, Future Earth and is increasingly used in academic publications. Along with this trend, usage of the term as well as practice have diversified and currently, there seems no commonly agreed on the definition. One of the main areas of our research is therefore to redefine TD by reviewing literature and case studies. We use the term co-creation as an umbrella term to refer to TD and other relevant approaches involving non-academic stakeholders in academic research.

We have launched Kankyo Tomosiru, an online platform to promote co-creation efforts towards sustainable development. The website introduces various resources useful for practicing co-creation and transdisciplinary research, such as short introductions to key concepts, tools and methods, tips, as well as case studies from around the world.

STORY 1

Biodiversity and human well-being

Lake Biwa area, Japan



STORY 2

Hot spring monitoring with local residents

Beppu City, Japan



STORY 3

Towards fair water management

South Sulawesi, Indonesia

